

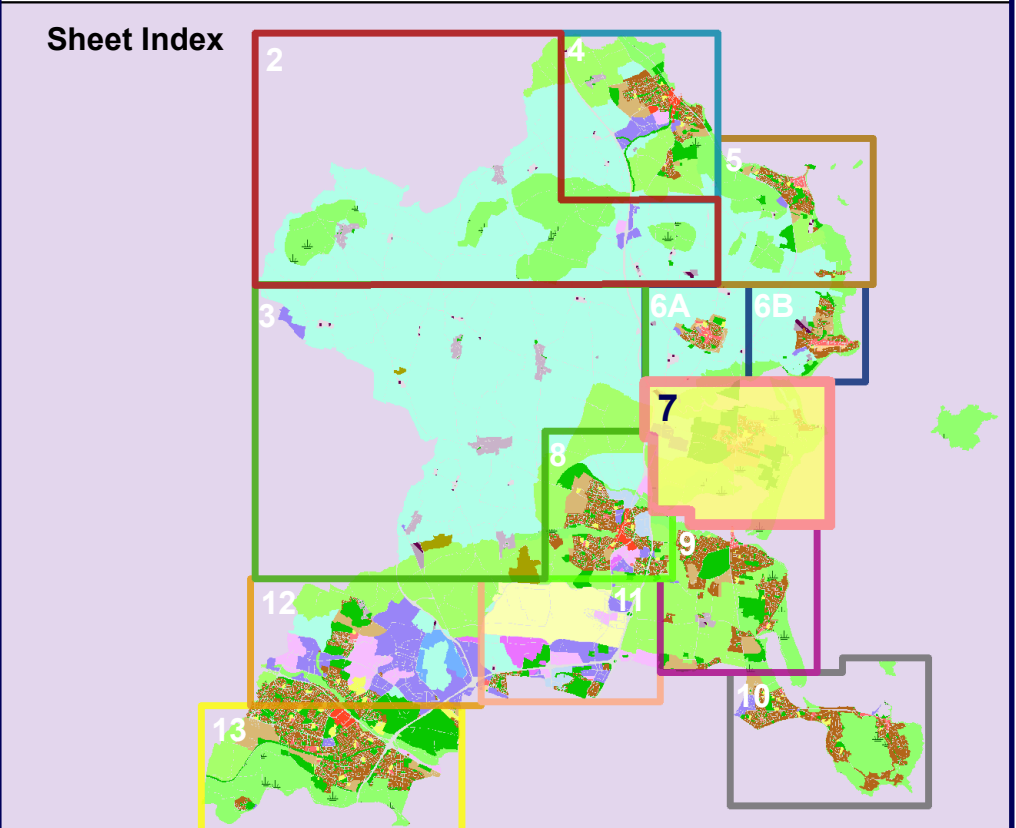
Zoning Objectives

- Objective CI Provide for and protect civic, religious, community, education, health care and social infrastructure
- Objective GB Protect and provide for a Greenbelt
- Objective GE Provide opportunities for general enterprise and employment
- Objective HA Protect and enhance high amenity areas
- Objective LC Protect, provide for and/or improve local centre facilities
- Objective OS Preserve and provide for open space and recreational amenities
- Objective RA Provide for new residential communities in accordance with approved local area plans and subject to the provision of the necessary social and physical infrastructure
- Objective RB Provide for and facilitate rural-related business which has a demonstrated need for a rural location
- Objective RC Provide for small scale infill development serving local needs while maintaining the rural nature of the cluster
- Objective RS Provide for residential development and protect and improve residential amenity
- Objective RU Protect and promote in a balanced way, the development of agriculture and rural-related enterprise, biodiversity, the rural landscape, and the built and cultural heritage
- Objective TC Protect and enhance the special physical and social character of town and district centres and provide and/or improve urban facilities

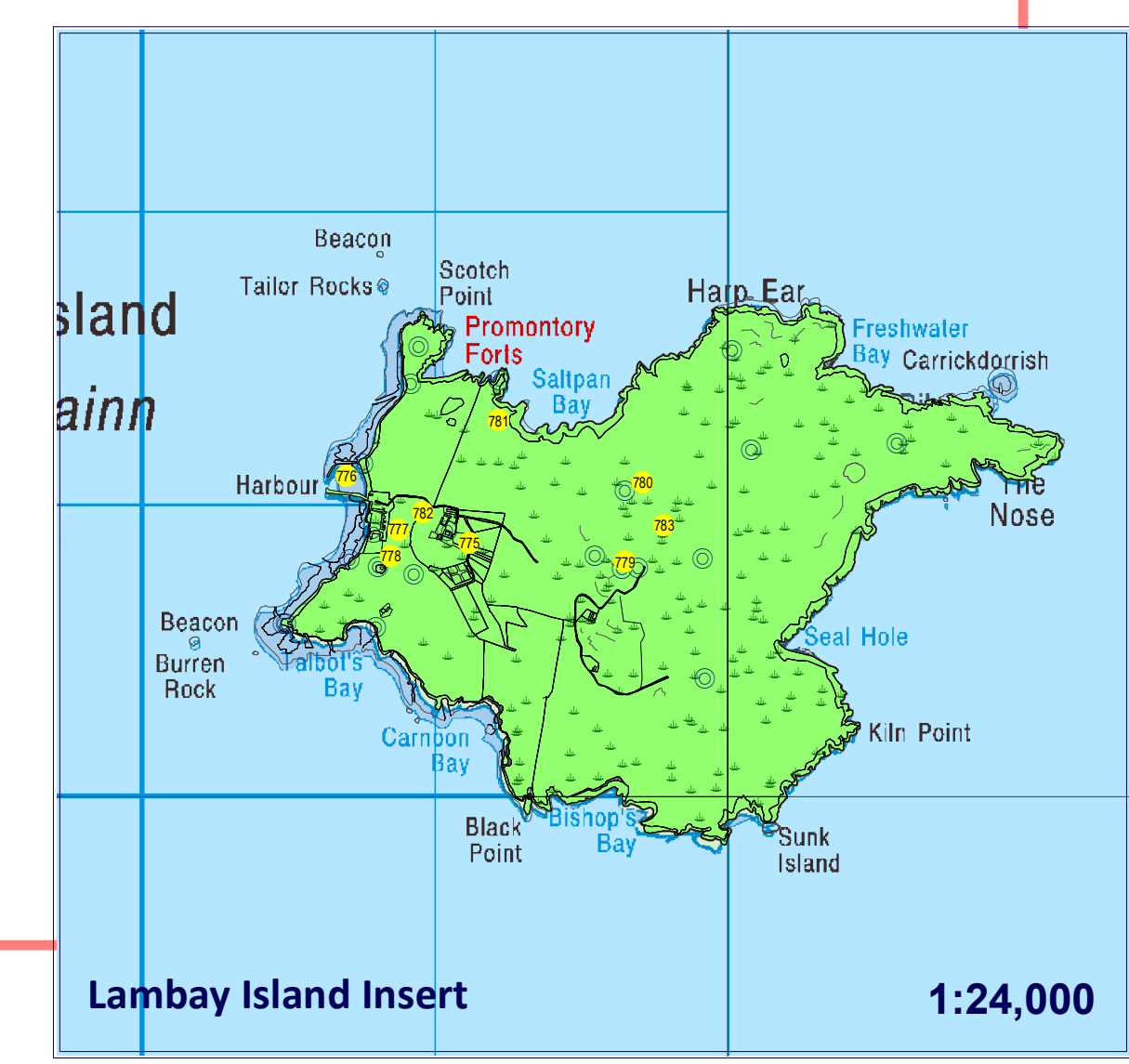
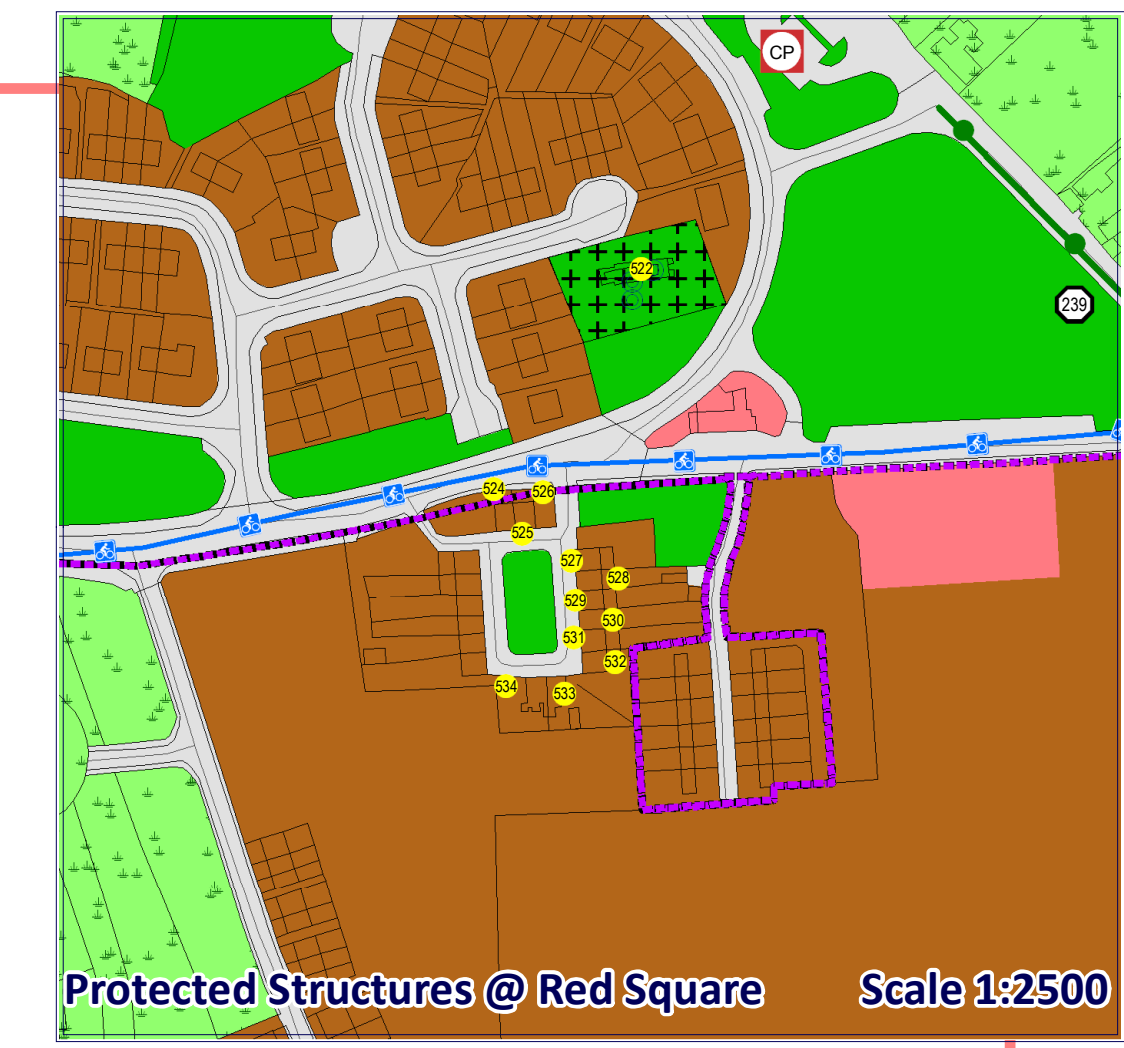
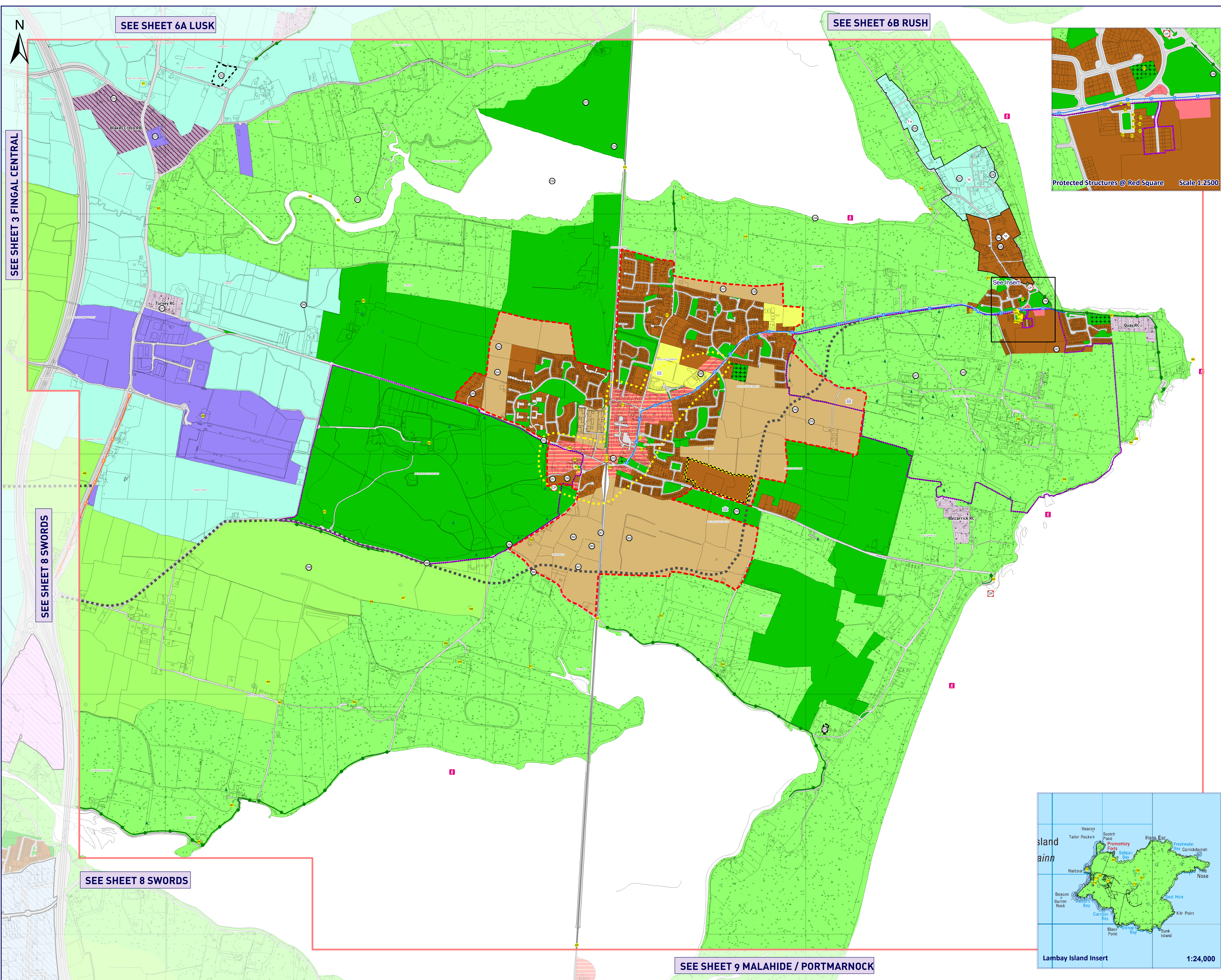
Specific Objectives

- Protect and/or provide for a Burial Ground
- Architectural Conservation Area
- Development Boundary
- Indicative Cycle/Pedestrian Route
- Quality Bus Corridor
- Road Proposal
- Preserve Views
- Site Specific Objective Boundary
- Urban Centre Strategy/Study Area
-
-
-
-
-
-
-
-

Note:
For further detail please refer to the Written Statement and/or Appendices and the Green Infrastructure Maps



Director of Services : Gilbert Power Date: April 2011
Senior Planner : Rachel Kenny Scale: 1:7,500



SEE SHEET 9 MALAHIDE / PORTMARNOCK